

First-Year Success Orientation Programme

Vol.1: Onboarding
2025



Contents

Importance of Orientation.....	4
Hi from the First-Year Success@Mandela Team.....	5
Message from the Vice-Chancellor.....	6
Welcome from the DVC: Teaching & Learning.....	7
Important Dates.....	9
Nelson Mandela University in Brief.....	10
Gqeberha Campus Numbers You Might Need.....	11
Communication To Provisionally Accepted Applicants (2025).....	13
Faculty Administration Information.....	15
George Campus Numbers You Might Need.....	17
Safety And Security at Nelson Mandela University.....	19
Ultimate Ready4uni Guide.....	20
Guidelines from the First-Year Success@Mandela Team.....	21
University Terminologies.....	22
Faculties at Nelson Mandela University.....	23
Campus Map Guideline.....	24
What we can do for you. Gqeberha & George Services.....	26
Student Disciplinary Code.....	34
Unwinding Spots.....	35
My Student Budget Planner.....	36
'SNAC' Student Hunger.....	37
Shuttle Services- Registration.....	38
Shuttle Services- Locations.....	39
On the Go Transport (Gqeberha).....	40
Tips for Time Management.....	41
It's a Good Idea to Get Involved.....	42
Maps.....	43



YOUR GUIDE TO **First-Year**

2025

IMPORTANT

The way forward

Read this guide before you arrive on campus to have an idea of what to expect.

Contact us

If you are unsure about anything, do not hesitate to contact us:

Tel: +27 41 - 504 3773/1936

FYS@mandela.ac.za

Join the FYS WhatsApp Channel

Call Nelson Mandela University Contact Centre on +27 41 - 504 1111 OR

See: Useful contact details @ Nelson Mandela University in this guide

Find **2025 registration** information **HERE**



[Orientation.mandela.ac.za](https://orientation.mandela.ac.za)



@First-Year Success: Mandela



@fys_mandela



@fys_orientation

The Importance of Orientation



Meet your classmates plus First-Year Success Mentor(s) before your Academic journey starts.



Get to know the Mandela campuses, facilities, environment and understand university terminology.

Equip you with skills to attain your qualification in record time!!!

Helps you explore all the different tools and resources to support you on your university journey.

You will feel confident and prepared to start your university adventure.

Greater awareness of diversity and will help you to understand and respect all the different cultures at the university.

You will build social relationships with: Buddies, peers and staff.



Hi

From The First-Year Success@Mandela Team

Hey there, Mandela Uni Student!

Welcome to Nelson Mandela University– your awesome new home away from home! We know starting university can be a mix of excitement and nerves, but don't worry, we've got your back every step of the way.

So, you're diving into an ocean of changes – saying bye to fam and friends, getting the hang of new courses, and figuring out the university vibes. It might feel like a rollercoaster, but guess what? Totally normal! Everyone goes through it, especially in the first year, which is like the superhero training ground.

But hey, no stress! We've got some cool strategies in place to make your transition super smooth. We want you to rock the university journey with confidence. Our First Year Success@Mandela Orientation Programme is your sidekick in this adventure, and trust us, it's not just about finding your way around – it's your ultimate guide to conquering university life like a champ!

Ready for the memo? Our programme will spill the beans on how to handle the university challenges, how to ace your studies, and more.

We've got your back with academic hacks, wellness

vibes, social gatherings, cultural happenings, and sports. It's like the university starter pack you never knew you needed!

Here's the lowdown – you're getting a First-Year Success (FYS) Buddy. Consider them as your campus mentors, the superheroes of university life who have been there, and done that. They're ready to be your partners in crime throughout the first term. Think of them as your personal guides, making sure you triumph over academic challenges while ensuring you have a fantastic time along the way.

This programme is just the beginning of your epic university journey. Your FYS Buddy will have your back, helping you navigate the twists and turns. Soak it all in, make the most of this opportunity, and get ready for an unforgettable ride!

Welcome to Nelson Mandela University – where the adventure begins!

We're cheering you on every step of the way. Enjoy the ride, and here's to an incredible university experience!

**Warm Regards,
The First-Year Success Team**



Dr Lekwa Mokwana
Director: Learning Development



Ms Zintle Magele
FYS Coordinator



Ms Zonele Mdiya
Student Success Coach
(George Campus)

MESSAGE FROM THE VICE-CHANCELLOR

Welcome to Nelson Mandela University – the only university in the world to carry the name of our former President, an internationally renowned statesman and icon, Nelson Rolihlahla Mandela.

Your decision to join us will probably be one of the most important decisions in your life.

Here you will find a new world – a new way of life, new knowledge, skills and experiences – and an opportunity to discover yourself, and hopefully the true potential that lies within you.

It is what our iconic namesake, Nelson Mandela, would have wanted – a chance for you to grow in knowledge, to embrace core values of humanity and to always strive towards creating a better, more socially just world. Nelson Mandela University offers you the space to achieve this and more.

Apart from a vast portfolio of academic programmes, outstanding facilities, research, engagement and other opportunities, the University's values of excellence, integrity, Ubuntu, diversity, responsibility, respect for the natural environment and social justice guide all our actions.

***I encourage you to
aspire to these values
and strive to serve
a cause larger than
yourself.***

I encourage you to make the most of the years that lie ahead, for being at a university is a great privilege. I would like to encourage you to participate in all aspects of university life, both within the learning and teaching domain and beyond-the-classroom – in clubs, societies, seminars, public debates, sport, doing voluntary work and participating in the range of programmes and projects we are engaged in in our neighbouring communities and, of course, making new friends.

Ours is a cosmopolitan, international and multicultural university. Take advantage of this by engaging with students and staff from different corners of the earth. Learn from each other and together strive to change the world for the better.

Nelson Mandela University offers a rich and diverse spectrum of academic programmes organised into seven faculties spread across seven campuses in Gqeberha and George. Here, you will find dedicated staff members who will be more than willing to assist and guide you in your journey from first to final year of study. Our aim is to foster a student-centred learning experience and we encourage you to make full use of the many opportunities at our University.

The University offers a wide range of learning resources – modern library facilities, online networks with vast databases, enrichment and remedial support programmes, student counselling services, tutoring and advisory services. Make full use of these services, ensuring you have optimal support in pursuit of your academic responsibilities.

Make use of this opportunity to acquire a rich educational experience – one that is not only academic but also socially compassionate – in creating a more socially-just, equal society and a sustainable planet for all.

We thank you for entrusting your dreams with us. It's you who make us want to do better, because it's you, our students, who give our institution a human face – through your achievements, and the choices that you make as a result of having been part of the Nelson Mandela University family.

I wish you an exciting journey. Make the most of it and in the not too distant future, I hope to see you on the Graduation stage!



All the best for 2025

Professor Sibongile Muthwa
Vice-Chancellor

WELCOME

FROM THE DEPUTY VICE-CHANCELLOR (DVC) LEARNING AND TEACHING

A warm welcome to students in the Class of 2025



AY2025: Welcome to Nelson Mandela University!

Thank you for choosing our university. We look forward to welcoming you to our learning and teaching, as well as our learning and living spaces. Our academics, administrative and professional staff are ready to provide you with learning and living opportunities and experiences that will assist you in your academic journey, as well as prepare you for the world of work and for the world in general. At Mandela University we understand that students come with valuable learning experiences that we would like to tap into, enhance and in some cases challenge. I hope that you will be open to having your ways of being, doing and thinking critically and scholarly confronted and contested as you learn to develop your own ideas.

All students are expected to be back on all our campuses in Gqeberha and George. You are encouraged to make sure that you prioritise your studies, pay attention to detail, due dates and deadlines. Please make sure that you ask when you do not know, are not sure or confused. It is expected that students will not always know and so we have different departments that are dedicated to assist you in navigating your academic journey with you.

Student orientation started through Pre-Uni Connect. Information is made available via the First-Year Success (FYS) website (<https://orientation.mandela.ac.za/>). The new website has quick instant “push to connect” icons for social media, which takes you directly to each platform. It has a new short and precise expandable menu which makes it easier for visitors to find information. Information is specifically grouped per Faculty to accommodate visitors who want specific information. As part of the Pre-Uni connect FYS strategy, information is sent to all students who have been provisionally accepted via the FYS Whatsapp channel. Each FYS Buddy has been assigned a group of students to support and guide online via a WhatsApp group before and during the FYS orientation period. The Buddies will continue this support throughout orientation and the first weeks of lectures.

The Vice-Chancellor’s Welcome will take place on Saturday, 01 February 2025 in the Indoor Sports Centre on our South Campus. I hope that you and your parents and/or guardians will be able to join us

as we welcome you. Executive Deans of Faculties will also welcome you in your specific faculties to give you a sense of what to expect and what your support structures, lecturers have prepared for you in your specific discipline.

Faculty Academic and Social Welcome sessions will commence in the week of the 03 – 07 of February 2025 in Gqeberha and George. The programmes were finalised at the end of January and distribution via Faculty and the FYS Office to all accepted first-years.

***Thank you for choosing
our university. We look
forward to welcoming
you to our learning and
teaching, as well as our
learning and living spaces.***

“

First Year Success (FYS) Orientation Programme & FYS Buddies

Get ready for an exciting start to your university journey! Our dedicated First-Year Success Buddies, who are experienced senior students, professionally trained, and in the same course as you, are eagerly anticipating your arrival. They will be there to guide and assist you during the orientation period, ensuring a seamless transition into university life.

The First-Year Success Team is committed to ensuring that you are paired with a suitable FYS Buddy. Rest assured, your contact details obtained from the university will be shared with your FYS Buddy solely for communication purposes so that you are easily connected with your FYS Buddy. Look forward to hearing from your FYS Buddy starting from 28 January 2025, via WhatsApp, SMS, or email.

The FYS Orientation programme will run from 03 – 07 February 2025, following an in-person approach. Online information sharing and support continues through our social media platforms and the website.

This kind of support will continue further through the Pre-Uni connect WhatsApp channel that will be created and handled by FYS Buddies.

We understand that not all students may be able to attend Orientation during the scheduled week due to various challenges, or personal matters that need urgent attention. To accommodate this, we will be organizing follow-up (plug-in) sessions from February - April 2025. These sessions aim to ensure that no student is left behind, regardless of when they join the orientation process.

If you have any questions about orientation or any other university related concerns, please first reach out to your FYS Buddy for guidance or connect with us on our social media platforms, including the website.

Study Delivery Differs from programme to programme
In general, the delivery modes of modules and programmes will use a Blended Learning approach. Blended Learning involves integrated/combined use of mixed modes of various pedagogical approaches and teaching methods including online delivery, in-person lectures and/or tutorials to accomplish educational goals and learning outcomes. Students will therefore need to be in Gqeberha or George to use the university's general and specialised computer labs and Wi-Fi on campus and in on-or accredited off-campus student residences so that they can engage in blended learning. We discovered in 2024 that some students did not attend in-person classes and did not actively participate in online classes. Their academic

performance was tracked, and we discovered that these students did not perform well. We have thus decided that all first years will have face to face lectures and only in fulfilling programme specific requirements will they have prolonged online lectures.

Important links

- Students can get all **registration-related information** [here](#).
- See the link for our **Orientation Website** with all information and faculty links [here](#).
- You can access **Orientation Timetables** [here](#).
- **Student Counselling:** Access counselling by emailing emthonjeni@mandela.ac.za
- For **NSFAS** related queries go [here](#) or email FinancialAid@mandela.ac.za
- For **residence related matters** please email Axola.bam@mandela.ac.za
- If you need support with **learning development** you can go [here](#).

Lastly, I would encourage you to stay in touch with your Faculty and visit their webpage and social media platforms for regular updates.



I wish you all the best with your studies!

Dr Muki Moeng,
Deputy Vice-Chancellor: Learning and Teaching

IMPORTANT DATES

➤ Department of Academic Administration Access and Enrolment 2025

6 January 2025	Nelson Mandela University Opens https://www.mandela.ac.za/
14 January 2025	Online Registration Begins FOR FIRM OFFERS https://www.mandela.ac.za/Registration
14 January - 14 February 2025	Finalisation of Offers and Responses to Provisionally Accepted Students
3 - 7 February 2025	Change of Mind and Reconsideration of Courses
31 January 2025	Nelson Mandela University on-campus residences open to new first-year students https://www.mandela.ac.za/
1 February 2025	Vice-Chancellor Professor Sibongile Muthwa's Welcoming Address for First-Years See https://www.mandela.ac.za/ for more details
3 February 2025 - 7 February 2025	Assisted Registration for First-Year Students
8 February 2025	Finalisation of Change of Mind and Reconsideration Requests
3 February 2025 - 7 February 2025	First-Year Success (FYS) Orientation Thrive Programme https://orientation.mandela.ac.za?
10 February 2025	Lectures Begins

All Access and Enrolment related enquiries should be directed to **admissions@mandela.ac.za**

***These are just some of the important dates**

Please visit the University Website at **<https://mandela.ac.za/>** for more information

Disclaimer: This information was correct at the time of distribution

NELSON MANDELA UNIVERSITY IN BRIEF



Nelson Mandela University, a new generation university whose students are nicknamed Madibaz, is named after one of the greatest men of the modern era, Nelson Mandela, popularly known as Madiba. We'd like to think we share many of the former president's greatest attributes – integrity, honesty, leadership and a zeal for developing our great multicultural nation.

Our Vision

To be a dynamic African university, recognised for its leadership in generating cutting-edge knowledge for a sustainable future.

Our Mission

To offer a diverse range of quality educational opportunities that will make a critical and constructive contribution to regional, national and global sustainability.

Our Values

Diversity
Excellence
Ubuntu
Social justice and equality
Integrity
Sustainable Stewardship

Our enthusiasm at Nelson Mandela University lies in laying the groundwork for life-long learning, by providing you with a first-class education. Nelson Mandela University wants to help you reach your full potential and assist you in making your dreams and aspirations become a reality.

You are one of over 32 000 students spread across six campuses, five of which are in Gqeberha and the other in George. We have seven faculties, tip-top facilities and offer a lifestyle that is the envy of many.

Reasons to be Proud

We pride ourselves in:

- Being the only South African university situated in a nature reserve
- Having internationally-recognised quality programmes
- Offering academic support programmes
- along with free personal, career and academic assessment
- Having renowned partnerships with local, national and international companies and other universities
- Being multicultural. Nine per cent of our student body come from outside South Africa
- Producing graduates who are sought-after the world over

Diversity

Excellence

Ubuntu

Social Justice
and Equality

Integrity

Sustainable
Stewardship



GQEBERHA CAMPUS CONTACT NUMBERS YOU MIGHT NEED



Accounts Payment & Queries

Cashier (M)..... 041 504 1287
Cashier (N)..... 041 504 3224
Cashier (S)..... 041 504 4073 / 4072
Cashier (Second Avenue)... 041 504 3838

Arts, Culture & Heritage

Student Societies (S)..... 041 504 3561

Biokinetics and Sports

Science Unit..... 041 504 2603

Access & Enrolment

Office (North Campus)..... No OFFICE
Office (South Campus)..... 041 504 4829/4811/4993
Office (Missionvale Campus)..... 041 504 4829/ 4993
Office (George Campus)... 044 801 5194 / 5155

Student Health Services

South..... 041 504 2174
North..... 041 504 1149
Second Avenue..... 041 504 3762 / 3204
Missionvale..... 041 504 1374
George..... 044 801 5152/ 5126

Contact Centre 041 504 1111
George Contact Centre 044 801 5111

Universal Accessibility & Disability Services

(UADS)..... 041 504 2313

Emergency (All Hours)

Security (North)..... 041 504 2342 / 2009
Security (South)..... 041 504 2482
Security (N)..... 041 504 3636/3483
Security (2ndAve)..... 041 504 3710
Security (M)..... 041 504 1231/1439
Security (Bird Street)..... 041 504 4785
Security (Ocean Sciences). 041 504 4948

Assessment and Graduation

Office (North)..... 041 504 1000 / 3216
Office (2nd Avenue)..... 041 504 3876
Office (Missionvale)..... 041 504 3216/ 2105

Postgraduate Office

(North Campus)..... 041 504 9968/4326/3326

Financial Aid Office

Bursaries George Campus 044 801 5130
Bursaries Information..... 041 405 2514
North Campus..... 041 504 9956
Bursaries Missionvale Campus..... 041 504 1242

Help Desk: ICT Queries.. 041 504 3000

Library

General enquiries (S)..... 041 504 2298/2391/2294
General enquiries (N)..... 041 504 3410
General enquiries (2nd Ave)..... 041 504 3851
General enquiries (M)..... 041 504 1269
General enquiries (G)..... 044 801 5004/071 753 9555

Madibaz Sport

Madibaz Sport (Gqeberha)..... 041 504 2165
Madibaz Sport (George)... 044 801 5037
Madibaz Sport Facility (Bookings)..... 041 504 2555

Emthonjeni- Student Wellness

South & North..... 041 504 2511
Second Ave..... 041 504 3222
Missionvale..... 041 504 3854
George..... 044 801 5047

Most of these will be pointed out on the campus tour organised as part of the First Year Success@Mandela programme for first-year students.

The 24-Hours Crisis
Helpline Operated By
Lifeline..... 0861 322 322
Email..... safetalking@lifeline.org.za
Visit the Website..... www.lifelinesa.co.za

**SA Depression and
Anxiety Group (SADAG)
Helplines:**

Cipla 24hr Mental Health
Helpline..... 0800 456 789
SMS..... 32313
Chat Line (08:00-17:00).... 076 882 2775
E-Mail:..... university@anxiety.org.za

24hr Suicide Crisis Line... 0800 567 567

24hr Substance Abuse
Helpline (not toll free)..... 0800 12 13 14
SMS..... 32312

**Dr Reddy's Mental
Health Helpline
(08:00-20:00).....** 0800 21 22 23

**Adcock Ingram
Depression and Anxiety
Helpline (08:00-20:00)....** 0800 70 80 90

Higher Health 24-hour
Tollfree Mental Health
Helpline..... 0800 36 36 36
SMS..... 43336

**Gender-Based Violence
Support.....** 0800 428 428
SMS (for call back)..... *120*7867#
SMS 'help'..... 31531

**National Command
Centre**

National GBV Hotline..... 0800 150 150
Depression and Anxiety
Helpline..... 0800 708 090

Student Records..... 041 504 4699

**Student Systems,
Records and
Registration.....** 041 504 3229/2700



COMMUNICATION TO PROVISIONALLY ACCEPTED APPLICANTS (2025)



This communication serves to keep provisionally accepted applicants informed of the selection process, so they may prepare and understand each stage clearly.

OBJECTIVES

1. This message clarifies the meaning and implications of provisional acceptance for applicants and outlines the upcoming selection process.
2. Provisionally accepted applicants should be aware that meeting initial minimum admission requirements does not guarantee a firm offer for registration.

1. PROVISIONAL ACCEPTANCE: WHAT IT MEANS

Provisional Acceptance indicates that an applicant has met the initial minimum academic admission requirements for their chosen programme.

This assessment is based on the information they have provided with their application to study at Nelson Mandela University, which may include:

- Current Grade 12 results or Grade 11 Final Results
- Final Grade 12 (NSC) results from previous years (pre-2024)

A comprehensive selection process will be done, in which all applicants' results will be taken into consideration. The process entails:

- Consider results from current (2024) Grade 12

students alongside those from applicants who completed school before 2024.

- Rank applicants based on merit ie the Application Score and subject requirements for each programme, and giving firm offers to the highest-ranking candidates based on available spaces.
- Ensure the selection remains fair and transparent by considering all relevant applicants

It is important to note that provisional acceptance does **NOT** guarantee a firm offer.

Final selection for each programme will **ONLY** take place in January 2025, when the basket of all applicants with a provisional acceptance status, will be considered based on the ranking of their final Admission Score (AS).

2. FINAL SELECTION IN JANUARY

In January 2025, a comprehensive selection process will be done, in which all applicants' results will be taken into consideration. The process entails:

- Consider results from current (2024) Grade 12 students alongside those from applicants who completed school before 2024.
- Rank applicants based on merit ie the Application Score and subject requirements for each programme, and giving firm offers to the highest-ranking candidates based on available spaces.

NOTE: No action is required by applicants who sit for the current end of year matriculation examinations to submit additional results, as the University will obtain the 2024 Grade 12 final results directly from the Department of Basic Education. Applicants who completed school in previous years should ensure that any missing results in addition to what they have submitted to the University upon their applications, are submitted immediately.

3. SELECTION TIMELINE

The final selection period will occur between the release of National Senior Certificate results by the Department of Basic Education (expected around 17 January 2025) and the last day of registration at Nelson Mandela University, 7 February 2025.

During this time, applications may continue to be updated, ensuring that applicants are informed of their status as early as possible. Applicants can track the status of their application on the **University website** or Mandela Uni Mobile App and there is no need to come to the University for updates.

4. VARIOUS SELECTION CATEGORIES

Firm Offer: Applicants who receive a firm offer, based on the information provided, would be deemed as fully accepted into the indicated programme and can proceed with registration. These applicants will be required to accept this offer within five (5) working days of receiving the notification. The offer to study at Nelson Mandela University will be cancelled if applicants do not respond to it within the 5-day period.		
Waiting List: Applicants placed on the waiting list will be offered a space if firm offer applicants decline or cancel their application. Waitlisted applicants will be notified if a space becomes available.	Third Choice Option: Applicants who have not been offered a firm offer or awaiting list space may consider applying to an alternative programme if spaces are available.	Unsuccessful Applicants: Applicants who no longer qualify for their chosen programmes will be notified and may consider other options if space allows.

4. VARIOUS SELECTION CATEGORIES

Provisional Admission: Achieving provisional accepted status means that you have met the initial admission entry requirements, based on the information provided with your application to study at Nelson Mandela University, **BUT it does not automatically confirm a spot in the programme.**

- **Final or Firm Selection:** Acceptance is subject to the Application Score ranking outcomes after the final results are taken into account.
- **Notification of Status:** Applicants will be informed of their final admission status during the selection period indicated above. This period runs from when the Department of Basic Education releases the final Grade 12 results in January 2025 until the

last date to register for the 2025 academic year at Nelson Mandela University.

- **Results of the final admission statuses** will be sent via SMS text message, followed by a letter e-mailed to the e-mail address applicants provided when they applied to the University.
- **Furthermore,** applicants can access the outcome of their applications on the **University website** or on the Mandela Uni Mobile App.
- Applicants are strongly discouraged from travel to the University to check their applications status or to apply for a change of mind.

All enquiries can be logged via our **Customer Relations System** or by e-mail to **info@mandela.ac.za**.

FACULTY ADMINISTRATION INFORMATION



Faculty/Position	Name	Campus	Venue	Tel
HUMANITIES				
Executive Dean	Prof Pamela Maseko	South	New Admin Building – Room 0104	2187
Deputy Dean	Dr Jacqui Luck	South	Main Building (1) - Room 0301	3558
Manager: Faculty Administration	Drucilla Nzioki	South	Embizweni – Room 057	3252
Faculty Administrator	Nadeema Azem	South	Embizweni – Room 055	2802
Faculty Administrator	Noxolo Mngonyama	South	Embizweni – Room 054	2855
Faculty Administrator	Nomakhaya Nzuzo	South	Embizweni – Room 056	4608
Faculty Administrator	Tshenolo Thema	South	Embizweni – Room 057	3478
BUSINESS & ECONOMIC SCIENCES				
Executive Dean	Prof Hendrik Lloyd	South	Main Building 0910	3892
Executive Dean's Secretary	Ms Ronel Petersen	South	Main Building 0910	3892
Deputy Dean	Prof Michelle Mey	2 nd Ave	Room 0260	3824
Deputy Dean's Secretary	Mrs Kim Alexander	South	Main Building Room 259	3798
Manager: Faculty Administration	Mrs Noluvo Bobi	South	Embizweni Building Room 53	4608
Faculty Administrator	Denistia Gert	2 nd Ave	Bldg 409 - Room 019	3804
Faculty Administrator	Fundiswa Ngubo	2 nd Ave	Bldg 409 - Room 019	3706
Faculty Administrator	Mandisa Mazinyo	2 nd Ave	Bldg 409 - Room 019	3707
Manager: Faculty Administration	Xolani Sipoyo	2 nd Ave	Building 7 - Room 8	2120
Faculty Administrator	Noluvo Bobi	South	Bldg 7 - Room 30	2801
Faculty Administrator	Manelisi Klaas	South	Bldg 7 - Room 7	2939
Faculty Administrator	Tammy Bulembu	South	Bldg 7 - Room 29	2248
Faculty Administrator	Denistia Gert	South	Bldg 7 - Room 06	4392
Faculty Administrator	Marchele Naidoo	South	Bldg 7 - Room 08	2120
EDUCATION				
Executive Dean	Prof Heloise Sathorar	South	Bldg 11 - Room 00 05	2953
Deputy Dean	Prof Shervani Pillay	South	Bldg 6- Room 01	1195
Manager: Faculty Administration	Ridaa Salie	South	Bldg 11 - Room 00 06a	2125
Faculty Administrator	Jackie Hay	South	Bldg 11 - Room 00 06b	4568
ENGINEERING, THE BUILT ENVIRONMENT AND TECHNOLOGY				
Executive Dean	Prof Marshall Sheldon	North	C Block - Room C252	3955
Deputy Dean	Prof Dalenca Pottas	North	C Block - Room C112	9100
EBET Faculty Officer	Mr Jonathan Dorothy	North	C Block - Room C112	3447
Faculty Academic Consultant	Ms Noxolo Mngonyama	North	C Block - Room C113	3995
Faculty Academic Consultant	Mrs Amber Labuschagne	North	R Block R102	3439
Faculty Academic Consultant	Jason Ah Tow	North	C Block - Room C113	3660
Faculty Academic Consultant	Hildegard Boshoff	North	C Block — Room C 112	3446

HEALTH SCIENCES

Executive Dean	Prof Zukiswa Zingela	South	M & P – Bldg-Room 0126	2815
Manager: Faculty Administration	Marilyn Afrikaner	South	M & P Bldg – Room 0120	2121
Faculty Administrator	Sibusiso Ningi	South	M & P Bldg – Room 0123	2956
Faculty Administrator	Vanessa Heunis	South	M & P Bldg — Room 0121	2957
Faculty Administrator	Heloise Levack	South	M & P Bldg – Room 0122	2749
Faculty Postgraduate Consultant	Mr Siyabulela Mashalaba	South	M & P Bldg – Room 0115	2109

LAW

Executive Dean	Dr Lynn Biggs	South	Embizweni – Room 0113	2190
Deputy Dean's Secretary	Ms Matapelo Noyi	South	Embizweni – Room 1216	4226
Deputy Dean	Mrs Lindi Coetzee	South	Embizweni – Room 116	4242
Deputy Dean's secretary	Ms Matapelo Noyi	South	Embizweni – Room 0014	4688
Manager: Faculty Administration	Ms Jannet Kato	South	Embizweni – Room 1216	4226
Faculty Administrator	Ms Noluthando Tshijila	South	Embizweni – Room 0104	2588

SCIENCE

Executive Dean (Acting)	Prof Zenixole Tshentu	South	Building 13, Rm 0206	2074
Deputy Dean (Acting)	Dr Buyisiwe Hlangothi	South	Phys/Chem Building (13) Room 0305 (South Campus)	3270
Faculty Administrator	Mr Sihle Khuzwayo	South	M & P Building (7) Room 0127	2897
Faculty Administrator (BSc and BSc extended)	Miss Fiona Heilbron	South	Life Science Building(127) Room 0007 (South Campus)	2679
Faculty Administrator (Diploma, advance diploma, honours)	Mr Siyabonga Mayana	South	Life Science Building(127) Room 0007 (South Campus)	n/a
Faculty Administrator (Masters and PhD)	Miss Tessa Penrith	South	Life Science Building(127) Room 0007 (South Campus)	2249

GEORGE CAMPUS CONTACT NUMBERS YOU MIGHT NEED



Concerns	Contact person / resource	Telephone
General enquiries	Willize Venter: Reception, Admin Building	044 801 5111
Registration queries	Nonkululeko Nokhepheyi	044 801 5566 044 801 5048
Account queries	Stacey Swigelaar: Admin Building Zandile Mpange; Admin Building	044 801 5098 044 801 5053
Residences	Khululwa Mvango: Outeniqua (Female res) Anathi Masebeni: Stinkwood Residence (Male res) Sinesipho Mketo: Sindiso Magaqa Residence	044 801 5034 044 801 5136 044 801 5067
Off Campus Accommodation	Theo Barnes - Kiepersol	044 801 5139
Communication and Marketing	Milisa Piko: Admin Building	044 801 5081
Medical services	Sister Mietjie Kock: George Clinic Doctor visits on Thursdays	044 801 5062
HIV/AIDS Counselling	Antoinette Piet: George Clinic	044 801 5126
Private Patients	Contact Mediclinic, York Street	044 803 2000
Outpatient services	George Provincial Hospital Municipal Clinics	044 874 5122 044 874 9215
Campus Shop Contact Details	Campus Shop 17, Pre-Cap center, 28 Courtenay St, Bodorp Email: Henriët.kostopoulos@vanschaik.com	044 801 5088
Academic problems	Contact your Director of School (DoS) or Faculty Representative	044 801 5561
	Faculty of Business and Economic Sciences: Mr Pieter Brodrick:	044 801 5586
	Faculty of Science: Prof Josua Louw: Faculty of Engineering, Built Environment and Information Technology:	044 801 5019 044 801 5573
Emthonjeni - Fountain of Student Wellness	Emthonjeni - Fountain of Student Wellness: Room 014, Mopani	044 801 5051
	The Emthonjeni - Fountain of Student Wellness office provides student counselling services on the George Campus. Appointments can be made through Ms Ilona Joshua on 044 - 801 5047 or by e-mailing Ilona.joshua@mandela.ac.za	

Counselling services include personal, study, life-skills and career counselling.

All counselling interviews are private and confidential.

There is a Career Resource Centre where career and bursary information is available.

Development services include leadership training, academic skills, new student orientation, life skills training, career skills and personal development.

Concerns	Contact person / resource
Academic and financial administration	Staff from the financial and academic administration departments are available to assist with queries.
Transport	There is a bus service between town and George Campus, see notice boards for details. This service runs regularly during the day.
Refreshments	Regular meals and snacks can be bought from the dining room or cafeteria – either using a prepaid account or on a cash basis. Catering queries can be directed to the catering manager, Ms Mpheletshedzeni Netshilema on 044 801 5032 . Arrangements to deposit funds into the meal account should be made through the Finance Office, Zandile Mpange on 044 801 5053 .
Accommodation	The main residences on campus are, Outeniqua (women), Kalander (female), Kamassi (male), Umdoni (male), Phoenix (male) plus a number of houses that are used for student accommodation. The residence managers can be contacted for further information on 044 801 5034 (ladies) and 044 801 5136 (males) . The residence managers assisted by the House Committee, looks after student needs.

Student finance	Students are responsible for financing their own fees. Limited bursaries and study loans are available. For more information contact Natasha Thorne at the Financial Aid office on 044 801 5130 .
Library	The library is open from 07:30-20:00 Mondays to Fridays and 09.00-13.00 on Saturdays. Librarian: Lungisile Magoso, on 044 801 5004 . A student card must be presented to access the library.
Computer facilities	There is 24-hour computer access which is monitored by security. To access these facilities, a student card must be presented. Additional ICT information can be obtained from Rolihlahla Pityana 044 801 5044 or Roli.Pityana@mandela.ac.za

Student Life

Interests	Contact person / resource
Student societies and life	An excellent way to make friends and develop your knowledge, skills and experience is to join one of the many student societies or clubs. These are run by students for students and are open to all students who subscribe to the specific aims of the society. If you wish to know more about a particular society, contact the society leaders or Student Affairs, Ms Noxolo Nombembe, on 044 801 5058 . Watch the notice boards for news of societies' activities.
Sport on campus	All George Campus students are members of the sports club which gives them access to all the sports facilities. Students are encouraged to participate in sporting activities for the sake of their physical well-being, to develop leadership skills and to meet fellow students. Contact the Sport Officer Hugo Loubser on 044 801 5037 or Mr James Jobo on 044 801 5179 for further queries.



SAFETY AND SECURITY AT NELSON MANDELA UNIVERSITY



While the university does its best to ensure your safety on campus, you also have a role to play. Be watchful of your belongings, do not display valuable items in public and take precautions to avoid placing yourself at risk. Theft is the most common crime on campus. The best means of prevention is to reduce or remove the opportunity.

Criminals are particularly interested in students since students tend to have expensive laptop computers, cell phones, tablets and other gadgets – and all of these things are light, portable and very easy to sell and convert into cash. So don't make yourself a vulnerable and easy victim.

Nelson Mandela University is fully committed to maintaining a stable and safe environment to allow

students to study with peace of mind. The campus has security personnel on duty around the clock.

If you feel threatened by anyone or witness anything suspicious, call the central control room on 041-504 3483 or 2009 from any internal campus telephone, 041-504 2482 on South Campus, 041-504 4785 at Bird street Campus, 041-504 3710 at 2nd Avenue Campus, 041-504 4948 at Ocean Sciences Campus, 041-504 1231 on Missionvale Campus and 044-801 5114 at George Campus. There is also an anonymous Crime Line on 041-504 9998.

The MEMEZA! (meaning SHOUT!) Yellow whistle campaign is an anti-gender-based violence initiative to improve our safety. Get your yellow whistle from the libraries and campus clinics.

SAVE EMERGENCY NUMBERS ON YOUR PHONE

Central Emergency Line: 041 504 2009 (GQ)
Security: 044 801 5138 (George)



North Campus:	041 504 3636/2342
South Campus:	041 504 2482
Missionvale Campus:	041 504 1231
2nd Avenue Campus:	041 504 3710
Bird Street Campus:	041 504 4785
George Campus Control:	044 801 5183
George Campus Main Gate:	044 801 5114

24/7 Toll Free: 0800 801 91
Whatsapp Crime Line: 064 178 3343

The 24 hours crisis helpline operated by Lifeline:
0861322322 or www.lifelinesa.co.za

Ultimate

READY4UNI GUIDE



GUIDELINES FROM THE FIRST YEAR SUCCESS@MANDELA TEAM

How to help your child succeed

Here are specific things you can do to help your child achieve academic success:

Encourage them to attend the first-year orientation programme. Events in this programme provide a critical link between high school and first-year university and are designed to help first-year students build a support network, access campus resources and understand the intellectual expectations of university. Research indicates that students who participate in orientation programmes settle into university life more quickly than those who don't.

Encourage them to treat academic efforts like a full-time job. If a full-time student can commit to a 35 to 40-hour academic week (hours in class and hours spent studying), he/she increases his/her likelihood of being successful. Research has shown that students who see university as a part-time job do not fare as well.

Share the idea that intellectual work can be fun. University is a major responsibility, but it is also an exciting opportunity for students to experience new ideas. Encourage your son/daughter to take courses that interest him/her. Lecturers and student counsellors can assist in finding courses that both fulfil the requirements for the degree/diploma and spark the student's intellectual curiosity.

Share that attending class is the first and most important component of student success. Irrespective of whether or not a lecturer has an attendance policy, it is of vital importance that all lectures are attended. Some courses have very specific attendance requirements that affect the student's year mark. University is expensive and students should strive to get their money's worth from the experience.

Encourage him/her to get involved in campus activities since this helps them to network, build relationships and develop leadership skills. This also improves their marketability in terms of future employment.

Encourage him/her to develop an attitude for success. A positive attitude will add considerably to the student's success. Parents have significant influence over the new university student's sense of self-confidence and self-worth. To maintain your son's/daughter's confidence, your communications with him/her should always be encouraging.

Encourage him/her to seek help from the Financial Aid Office should additional finance for studies be required.

Encourage him/her to identify problem areas at an early stage and to seek help to overcome them. Typical examples of problems are:

- Stress experienced from feeling overwhelmed
- Adapting to a new learning and living environment
- Homesickness
- Feeling lonely before friendships and activities become established
- Difficulty managing money
- The challenge of dealing with new-found freedom
- Remind your son/daughter about the importance of attending orientation!



UNIVERSITY TERMINOLOGIES



Getting to grips with university jargon. As you start university so you will be confronted with a whole new vocabulary – words like semester, DP and VC. To make things easier, we've compiled a glossary of terms to help you understand what's happening around you. For a more comprehensive list please go to Information and Tools on the student portal.

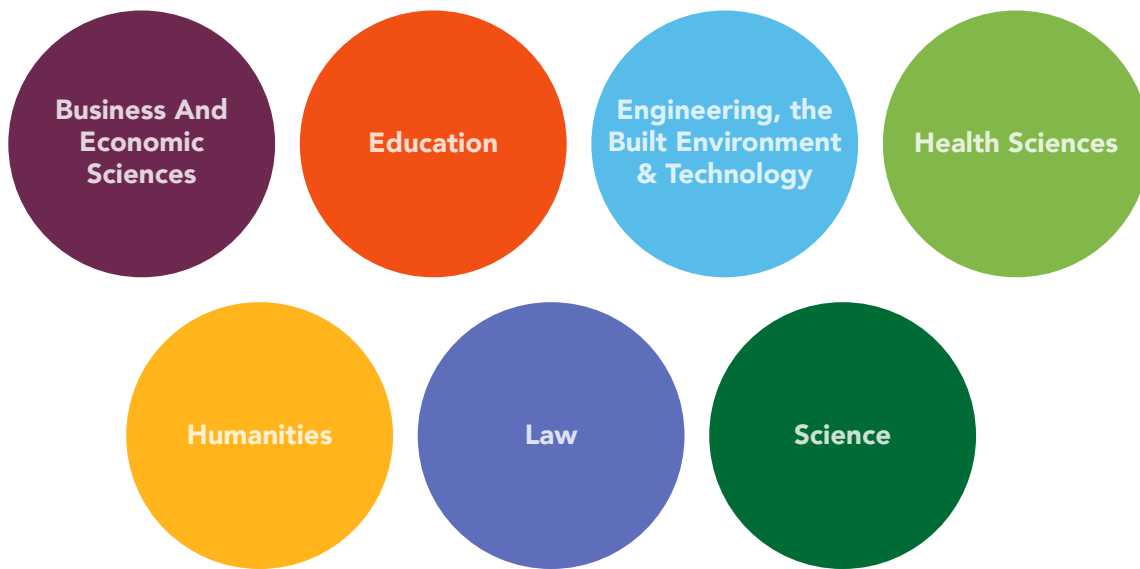
AS	Applicant Score – points allocated to your school subjects for admission to tertiary institutions
BA	Bachelor of Arts degree
BCom	Bachelor of Commerce degree
BSc	Bachelor of Science degree
BTech	Bachelor of Technology degree
Credit	The recognition obtained when a student passes examinations or tests to comply with conditions needed for completion of a qualification
Dean	Head of a faculty
DP	Duly performed certificate – some academic departments have minimum requirements for course work and class marks, before you are allowed to write the exam. If you have achieved these minimum requirements, you “get” a DP – usually indicated on a class list posted on a notice board before exams start
DVC	Deputy Vice-Chancellor - those who are second in charge. Nelson Mandela University has three of them
Faculty	A collection of schools and departments focusing on similar fields of study e.g. Faculty of Science
Faculty administrator	Assists with registration, cancellation of modules
First Year Success (FYS) Orientation Programme	First Year Success (FYS) Programme welcomes the student before their journey begins and then links students up with appropriately trained senior students who support them in the initial year of their journey by providing direction and support
HOD	Head of Department – in charge of a specific academic department
MBA	Master's degree in Business Administration
Module	A self-contained unit of learning that forms part of the course
NSFAS	National Student Financial Aid Scheme, a loan scheme to enable students to borrow money for their studies
Postgraduate	What you become when you complete your degree
Registrar	Responsible for student administration and institutional governance
RPL	Recognition of Prior Learning, the acknowledgement of the knowledge a student possesses as a result of prior learning
Senate	The body that governs academic policies and procedures in respect of teaching, learning, research and academic functions
Semester	First half of the academic year
SRC	Student Representative Council
Undergraduate	If you are doing your first degree, diploma or certificate
VC	Vice-Chancellor, the highest managerial position of a tertiary institution

FACULTIES AT NELSON MANDELA UNIVERSITY



In which faculty are you studying?

Faculties appear in alphabetical order as follows:



It is important that you attend the Welcoming Ceremony scheduled for your faculty.

Venues at Nelson Mandela University EXPLAINED

Venue numbers are indicated by either 6 or 7 digits: the first two or three digits indicate the building number; the middle two digits indicate the floor level; and the last two digits indicate the room number.

For example:

35 0040	Building 35; Ground Floor; Room 40
123 0007	Building 123; Ground Floor; Room 7
261 0132	Building 261; First Floor; Room 32

Some venues on South Campus also have names, for example, Embizweni (building 9), Old Mutual (building 4) and Sanlam (building 5), while some are referred to by the main academic programme offered there, for example, Music (building 10), Maths and Psychology (building 7), Education (building 11), new HMS and Dietetics (building 125).

At North, Second Avenue, Ocean Sciences, Bird Street and Missionvale campuses, venues were previously named after letters of the alphabet, for example, A - M at North; X, Y, Z at Second Avenue; and A, B and DD at Missionvale. Though sometimes still referred to by letters, they have been changed to only numbers, for example, M-block at North Campus is now 261.

CAMPUS MAP GUIDELINE



1. SOUTH CAMPUS

Nelson Mandela University's South Campus is considered the main campus of the university and houses the main administration, including the office of the Vice-Chancellor, in its 18-story Main Building. The tall concrete structure is branded with the Nelson Mandela University logo.



2. NORTH CAMPUS

The North Campus is located next to the South Campus, it features a state-of-the-art Newtonian (Engineering) Building equipped with outstanding and advanced facilities. The campus houses various labs, Conference Centre, and various university support services.

3. MISSIONVALE CAMPUS

The Missionvale Campus is situated along Johnson Road in the Missionvale area. Its library is one of the first in the country to use the Digital Addressable Lighting Interface (DALI) system integrated with a KNX control system, which automatically adjusts internal lighting levels using daylight harvesting and occupancy sensors. This feature is significant for preserving a stable environment, as light can damage books.



4. SECOND AVENUE CAMPUS

The campus features a Business School, an Archives and Exhibition Centre, a Governance unit, a food court, sports and recreation facilities, and residential accommodations for approximately 500 students. Notably, the Business School is the first in South Africa to earn an official Green Star design rating from the Green Building Council of South Africa.



5. GEORGE CAMPUS

The George Campus of Nelson Mandela University, located in the Western Cape Province at the foot of the Outeniqua Mountains, aims to be a premier center for the green economy and sustainable development through innovative research and quality education. It features extensive sports facilities, including a gym, swimming pool, and various playing fields, catering to sports enthusiasts. The campus also offers attractive residence options and a diverse range of academic programs.



6. OCEAN SCIENCES CAMPUS

The Ocean Sciences Campus, established in September 2017, is South Africa's first dedicated campus for ocean sciences, located near the North Campus. It emphasizes interdisciplinary research and sustainable development for coastal communities, balancing economic growth with environmental conservation. The recently completed Digital Dome, finished in July 2023, enhances the campus by providing multi-purpose and immersive capabilities, benefiting both the University's academic projects and the wider Gqeberha community.

7. BIRD STREET CAMPUS

The Bird Street Campus in Central Gqeberha serves as the University's Arts Hub, featuring the Art Gallery and historic buildings that host the School of Music, Art & Design's postgraduate programmes, the Jazz Unit, and a conservatoire. Additionally, it includes a culturally-focused "American Corner" to foster cultural engagement and a visual arts incubator that offers technical and business support to emerging creative entrepreneurs as they launch their own ventures.



WHAT WE CAN DO FOR YOU. GQEBERHA & GEORGE SERVICES



1. Accommodation

On-Campus Accommodation

You have chosen to live in well-resourced, professionally staffed, homely accommodation located on a premier site next to the sea. Here you will meet students from a variety of backgrounds and where you will be challenged intellectually, culturally and in the sports arena. Expect to learn a variety of new and exciting skills which will enhance your personal development.

Our university residences are a haven for hardworking, diligent, creative and progressive young people.

For any queries concerning fees, catering and other concerns, please contact the Residence Admissions and Placements office or visit our website for more exciting and current updated information.

STUDENT HOUSING		
Central Admissions Office	For All Residence Enquiries & Applications	041 504 1415/16 041 504 3690
Campus	Name of residence	Contact numbers
South	Claude Qavane (Xanadu) (first-year males) Solomon Mahlangu (Unitas) (senior males) Sarah Baartman (Melodi) (first-year females) Lilian Ngoyi (Veritas) (senior females)	Manager: 041 504 4547 041 504 2405 041 504 2402 041 504 2485
	Renaissance Postgraduate Student Village (mixed gender)	Manager: 041 504 3941
North	Charlotte Maxeke (Lebombo) (Junior females) Hector Pieterse (Letaba) (Junior males)	Manager: 041 504 9107 Manager: 041 504 3049
	Sanlam Student Village Sanlam Student Village Indwe (Senior females) Ikamva (Senior males) Sol Plaatjie (Protea) (mixed gender)	Manager: 041 504 4506 Manager: 041 504 4746 Manager: 041 504 3572
Second Avenue	Yolanda Guma (Oceana) (separate housing for males & females)	Manager: 041 504 3839
George	Residence Halls Residential Houses	Manager: 044 801 5034 Manager: 044 801 6136

Call the relevant Manager for general enquiries or visit our website: <https://studenthousing.mandela.ac.za>

Off-Campus Accommodation

Students requiring off-campus accommodation may call:		
Campus	E-mail	Contact numbers
Gqeberha	E-mail: offcampus.accommodation@mandela.ac.za	Tel: 041 504 2921
George	E-mail: Theophilus.Barnes@mandela.ac.za	Tel: 044 801 5139

2. Arts, Culture and Heritage Department

South Campus: 041 504 2508

George Campus: 044 801 5098

Arts and Culture is a vibrant unit that makes a substantial contribution to the enhancement of your university experience, contributing to your holistic development and enrichment of campus life. The department provides you with the opportunity to

express your talents by joining a wide range of interactive, cultural and active societies.

These societies are diverse and include performing arts, dancing, music, drama and choirs.

3. Student Health Service

- **South Campus:** 041 504 2174
- **North Campus:** 041 504 1149
- **Missionvale Campus:** 041 504 1373
- **Second Avenue Campus:** 041 504 3762
- **George Campus:** 044 801 5152 / 5126

Medical assistance is available on your campus. When you are not feeling well or are in need of information about any health-related issue, visit Campus Health Services. A comprehensive primary health care service is available on every campus. Various free services are available e.g. HIV testing and treatment, contraceptives, etc. All services are provided by registered health care professionals. Please phone the numbers above to make an appointment to consult with us.

4. Student Success

Learning Success Keys - Growth in maximising your Academic Success

Your success matters!

We offer key success workshop pointers that can support you as you navigate your plan from access to success. These workshops can be face-to-face or virtual.

Peer Learning Support:

- Creating a learning community will enable you to connect with other students and learn from each other's learning systems.
- Implementing peer assistance through a mentoring and tutoring programme creates shared spaces of learning; shared knowledge and shared responsibility.

Academic Success Workshops available:

- Mapping your goals
- Managing your deadlines
- Redesigning your study strategies
- Managing your stress
- My EQ - A catalyst towards my success
- My Learning Style
- Concentration and Memorisation

- Reading tips
- Get ready for your tests and exams
- Becoming transformative in learning
- Be Career Savvy - CV writing, cover letter, and interview workshops.

Contact details of the Learning Development Team:

Francisco De Vega: Francisco.deVega@mandela.ac.za

Ronelle Plaatjes: Ronelle.Plaatjes@mandela.ac.za

5. Co-Curricular Record

While in university, it is important to not only achieve your goals related to your academics, but also to develop yourself in ways that will help you be a potential employee that employers want to hire. You are encouraged to develop yourself in 16 key areas believed to be traits attractive to employers, both locally and globally. These learning outcomes include:

Whether it be through campus leadership positions like First Year Success Buddies, BtC and Res Mentors or involvement in experiences like societies or community involvement sites, co-curricular activities provide you opportunities in which you can develop these key skills. Additionally, you can receive formal recognition for the learning achieved through these out-of-the classroom activities with the Co-Curricular Record (CCR). The CCR serves as a companion to your Academic Record and formally acknowledges your participation in approved co-curricular activities, including the learning outcomes achieved through participation. It is never too early to start developing yourself for your future career.

For more information on the CCR, please contact your faculty administrator.

6. Contact Centre - 041 504 1111

info@mandela.ac.za | mandela.ac.za

This one-stop information hub will handle enquiries on study programmes for prospective and current students, support admissions processes, registration support, student account enquiries, information on exam rules; venues and dates and time, graduation support, student orientation, student records and general university and faculty support in directing enquiries to the correct department or employee.



7. Financial Aid

The Financial Aid Office is there to assist students financially. Not all students qualify for assistance and financial aid is granted on the basis of certain financial and academic criteria. If you would like to apply for financial aid, please visit one of the following offices:

FINANCIAL AID OFFICES

Campus	Office	Telephone
North	New Admin Building	041 504 3096
Missionvale	Building G38	041 504 1242
George	Finance Office	044 801 5098/5563

Do you know about our Scholar Merit scheme?

Scholar merit is an automatic award. It is based on your final Matric or National Senior Certificate results and is calculated according to a point system. For enquiries please phone the Financial Aid offices or visit our university website (mandela.ac.za) for further information pertaining to bursaries & our student merit awards.

Questions about your student fees or account?

If you are not sure about the financial status of your student account, please visit the Student Fees Accounts department. Make sure you have checked the due dates for payment of accounts and cancellation of modules.

How does not paying your account affect you?

- You may not be allowed to re-register
- Your exam results / diploma / degree may be withheld
- Your account may be referred to external debt collectors with costs
- You may be evicted from residence.

Financial planning

Ensure that you have sufficient money on arrival as your bursary might not cover certain expenses such as food, transport and rent. You must have cash for services like printing and photocopying throughout the year. Please read all documentation sent to you by the Financial Aid office. If you are unsure about anything, please contact them. It is important to come prepared.

8. Career Services

Career Services offer:

- Law Recruitment Programme annually during April
- Computer Science and IT Careers Fair in March, which targets computer-related qualifications
- Careers Fair, which gives an opportunity for students from all disciplines to interact with employers during week two of semester two
- Graduate Recruitment Programme (February - April and July until mid-September)
- Accounting and Law day, specifically for Accounting and Law students, in July/August
- Part-time jobs which are offered throughout the year to undergraduate students
- Bursaries provided by the companies are advertised through the office
- Job Placement
- Work Integrated Learning / Experiential Learning Placement (for students to complete the compulsory experiential learning/work-based component of academic programmes)
- Service Learning Placement
- Work Preparedness Training

Offices	Contact person
South Campus Ground Floor. Main Building (opposite cashiers)	041 - 504 2951
North Campus – R block, room 12	041 - 504 3540



✉ careerservices@mandela.ac.za
 🌐 careerservices.mandela.ac.za
 📘 Nelson Mandela University: Career Services
 📷 NMU_CareerServ
 📺 NMU_CareerServ
 in LinkedIn

9. HIV/AIDS Unit

South Campus

Director: Dr Rosemary Chimbala Kalenga 041 504 2344

Admin assistant: Anri van der Merwe 041 504 2876

The unit strives to be recognised for its leadership role in driving a sustainable comprehensive response to mitigate the health, and socio-economic impact of HIV & Aids on students, staff and the broader community through governance, teaching and learning, research, community engagement and service provision.

Programmes developed, supported or facilitated by the unit are informed by evidence-based research and have a comprehensive approach encompassing the domains of prevention, treatment, care and support. Local and international students are encouraged to enquire about and become involved in the various research projects that the unit undertakes.

10. Library and Information Services

South Campus: 041 504 2281/2294

North Campus: 041 504 3410

George Campus: 044 801 5151/5152

Second Avenue Campus: 041 504 3851

Missionvale Campus: 041 504 1269

Business School: 041 504 2044

Nelson Mandela University has six libraries, five of which are situated on the Port Elizabeth campuses, and one on the George campus.

All registered students and staff at Mandela are entitled to free membership of the Library and Information Services (LIS). Students must present their student cards annually at the Circulation Desk to register as library users.

Registered library users have access to the following services at all libraries:

- Short loan collection of books, articles and class notes that are in high demand
- Study collection with multiple copies of prescribed textbooks
- Inter-branch loans of library material between the different campus libraries
- Interlibrary Loans (This service is only available to registered masters and doctoral students and staff)
- Computer work stations for accessing Online

Library

Catalogue, full-text electronic databases and online journals

- Assistance with and training in finding information for assignments and research
- Self-service photocopiers/printers and areas for reading, studying, group discussion, viewing and listening

A range of Library and Information Services Guides, Posters and the Library Website (library.mandela.ac.za) provide further information about services, facilities and information resources.

11. Mandela International Office

South Campus

Tel: 041 504 2161

Building 87, South Campus

international@mandela.ac.za

international.mandela.ac.za

Nelson Mandela University is home to more than 1500 international students from over 60 countries around the world. The majority of international students are from the African continent.

The Mandela International Office (MIO) is on South Campus. Its main objectives are to comprehensively internationalise the university and to bring the benefits of internationalisation to local students and the local community by establishing mutually beneficial partnerships with like-minded universities across the globe.

One of the strategic imperatives of the MIO is to increase the international footprint of the university, with an emphasis on African engagement but also the expansion of our student recruitment initiatives and partnerships across the globe. All this is done to build global links for our university, add to Nelson Mandela University's diversity and provide both our local and international students with opportunities to extend their academic, research and social networks.

The MIO assists international students and visitors during their time at Nelson Mandela University. Main services offered by the MIO include:

- International student admissions
- Documentation for visas and visa renewal
- International student orientation
- International student finance
- Liaison with faculty, residences and departments on behalf of international students
- Assistance with academic and wellness support
- Intercultural functions, engagement and excursions
- Community engagement

Study abroad opportunities for South African students

The MIO provides study abroad opportunities to South African second- to final year students registered at Nelson Mandela University. Opportunities are provided to students to enrol for one semester abroad at a partner university. For more information contact international@mandela.ac.za or visit the Office for International Education.

12. Peer Helping

Peer helping is based on the well-researched fact that students often seek out their friends when they experience concerns, frustrations, or when they have to make decisions. The Peer Help Programme equips carefully selected and trained students to further develop and refine their natural helping skills. Peer Helpers get trained and supervised to provide listening, understanding and support to fellow students (their peers) – and to refer them to available resources. They are also provided with opportunities to organise and implement a range of psycho-educational initiatives in decision-making on matters such as life-style enhancement, career development and employability, as well as learning and academic skills. The ultimate aim of Peer Helping is to assist students in creating beneficial living and learning environments, making their university life as meaningful and enjoyable as it is meant to be!

As a first year student you can benefit from the support provided by Peer Helpers, enquire from the following offices:

Missionvale Campus: 041 504 1106
North Campus: 041 504 3222
South Campus: 041 504 2511
Second Avenue Campus: 041 504 3854
George Campus: 044 801 5047

13. Madibaz Sport

Madibaz Sport (Gqeberha): 041 504 2165
Madibaz Sport (George): 044 801 5037
Madibaz Sport Facility bookings: 041 504 2555
E-mail: madibazsport@mandela.ac.za

While the primary function of Nelson Mandela University is academic, the value of the holistic development of students and establishing of a culture of participation and competition is central to the institution's focus on the well-being of students. Madibaz Sport offers a wide variety of competitive and recreational sport programmes for students and staff, as well as for the wider university community. In addition, through the various high performance programmes coordinated by the Madibaz High Performance Complex, Nelson Mandela University plays a major role in the process of developing elite and potentially elite players.

Our Madibaz Fitness & Aquatics Centre promotes health and wellness for staff and students, as well as

for elite sportsmen and women to develop strength and fitness required at the highest level.

Visit our website www.mandela.ac.za/sport for more details on the different clubs available to join at Madibaz Sport. We also provide club members with excellent sports facilities, scientifically based coaching programmes and organisational and administrative support.

For more information contact Madibaz Sport at:

Port Elizabeth: 041 504 2165 or George: 044 801 5037

14. Emthonjeni- Student Wellness

George Campus: 044 801 5051 / 801 5168 / 801 5047
South Campus: 041 504 2511
North Campus: 041 504 3222
Second Avenue Campus: 041 504 3854
Missionvale Campus: 041 504 1106

What we offer?

Emthonjeni Student Wellness consist of a team of professionally trained psychologists (clinical, educational, counselling and research psychologists), registered counsellors and intern psychologists who are registered with the Health Professions Council of South Africa.

We offer you:

- We offer individual and group counselling under our psychological wellbeing services, and these are confidential and free to Nelson Mandela University students and are available on all campuses.
- Numerous group programmes presented in collaboration with your lecturers, other staff and Peer Helpers and packaged in relation to: academic issues, career choice and planning, wellness and personal, social and emotional concerns.
- **South Campus:**
counselling.South@mandela.ac.za
- **North Campus:**
counselling.North@mandela.ac.za
- **2nd Avenue Campus:**
counselling.2ndAve@mandela.ac.za
- **Missionvale Campus:**
counselling.Missionvale@mandela.ac.za
- **George Campus:**
counselling.George@mandela.ac.za

15. Student Governance and Development (SGD)

North Campus: 041 504 3229

South Campus: 041 504 3351
Second Avenue Campus: 041 504 3894
Missionvale Campus: 041 504 1235
George Campus: 044 801 5029

This department contributes towards the holistic development of students. Its core functions are the training and development of student leadership, the coordination of student life and events and supporting student governance structures such as the Student Representative Council (SRC). All students are invited to join a society of choice; the societies are categorised as academic, religious, developmental and political.

16. BtC – Beyond the Classroom Leadership Development

BtC – Beyond the Classroom Leadership Development Student Governance and Development (SGD) believes that all students, (not just those who hold formal leadership positions) are potential leaders.

This unit offers workshops that assist in the development of creative, independent, community-minded students who will contribute towards a positive living and learning community and assist in the creation of a vibrant student life and experience at the university. Join the Beyond the Classroom (BtC) Leadership programme which starts early in March. Contact Deidre.Potgieter@mandela.ac.za for further details.

Annual Nelson Mandela Convention - as part of its agenda embraces youth development from the NYP framework point of view and therefore, the initiative is a reflection of annual gathering of young people in youth development spaces and Higher Education spaces to engage on key pillars that contribute to youth development index. The purpose of the initiative is to open dialogue among youth and ensure policy initiatives and programs that reflect co-ordinated strategy for empowerment of youth in general. For more information on it please contact Mr Bernard Sebake on (041) 504 3351, email Bernard.Sebake@mandela.ac.za

Madibaz Youth Entrepreneurship Lab

The Madibaz Youth Entrepreneurship Lab aims to build an enabling entrepreneurial ecosystem at Nelson Mandela University through the advancement of support to new and existing youth entrepreneurs as well as through collaborations in areas of entrepreneurship development. The Entrepreneurship Lab also aims to embrace entrepreneurial mindsets and ethos amongst the students of Nelson Mandela University through practical entrepreneurship workshops, symposiums, mentorship, as well as opportunity for student entrepreneurs to run businesses on-campus.

041 504 3059 | Entrepreneurship@mandela.ac.za

entrepreneurship.mandela.ac.za/
Facebook: Madibaz Youth Entrepreneurship Lab
Instagram: madibaz.entrep

17. Universal Accessibility & Disability Services

South Campus: 041 504 2313
E-mail: disability@mandela.ac.za
Embizweni (main building), ground floor, room 0009

The UADS services at George Campus.
Ms Miso Mbuli.
Tel : 044 801 5041
office - 018 Mopani Building

Nelson Mandela University would like to ensure that students with disabilities do not experience unfair discrimination due to their particular challenges. This unit strives to ensure that reasonable accommodation, reasonable adjustment concerning accessibility, examinations and other academic concessions are made to meet your needs. Services currently available include portable devices for recording of study materials and enhancing quality of hearing devices, on-loan wheelchairs for hard-to-negotiate areas, special work areas in the libraries and general computer laboratories equipped with magnification and scanning software, and a wheelchair-friendly vehicle to assist with specific transportation needs.

As every case needs to be individually assessed, please register your special needs with the university's Universal Accessibility & Disability Services as soon as possible, preferably the year prior to registration and application. At your first appointment you will need to provide medical documentation from an appropriate professional. The goal of the consultations between students and the Universal Accessibility & Disability Services is to identify the impact of disability on the student and to maximise opportunities for independent participation.

We offer:

- Confidential, professional individual consultation sessions
- Workshop and information sessions for students
- A link to support organisations and networks relevant to your disability
- Training on assistive devices and software

Familiarise yourself with the university's Policy on Persons living with Disability, copies of which are available at this unit or on the Portal. Bursaries for students with disabilities are available on an annual basis, upon application through the Financial Aid Office.

18. Supplemental Instruction

All faculties and George campus:

What is SI?

SI is a student academic assistance programme that increases student performance and retention. The SI facilitators are senior students themselves, who have successfully completed the course concerned. They offer regular, out-of-class, peer-facilitated sessions after attending the lectures. The programme is offered to all students in the selected courses, predominantly

at first-year level.

Where is it offered?

SI is currently only available in selected courses at the South, North, Second Ave, Missionvale and George campuses. Departmental notice boards and lecture announcements will tell you where to find your sessions.

For more information, please visit si.mandela.ac.za





The University Shop Corporate Gift and Clothing Store

Sanlam Student Village (Main Store):

shop@mandela.ac.za or 041 504 4371
Mon - Fri 09:00 - 15:30

Missionvale Student Centre:

shopmv@mandela.ac.za or 041 - 504 1369
Tue - Thur 11:00 - 13:00

The University Shop is a project of the Alumni Association and was established as a brand development tool. By wearing Nelson Mandela University branded items, students, staff, alumni and friends can show their affinity and support for the institutional brand. You can visit the one-stop shop for all university branded clothing, bags, folders and stationery. The best sellers include hoodies, backpacks, caps, golf and t-shirts and pens.

Academic Literacies Writing Programme (ALWP)

When you need help with writing assignments contact the Academic Literacies Writing Programme!

The Academic Literacies Writing Programme (formerly called the writing centre) offers academic workshops and support for various aspects of academic writing. Specially trained writing respondents provide constructive feedback and advice on assignments that have been submitted online.

Please note:

- The turnaround time is 4-5 working days before the assignment's due date, so send your assignment to us as early as you can
- We do not proofread or edit students' work. We give constructive feedback on technical requirements and academic writing style, to help students with self-editing. Be prepared to do more work on your assignment when you get it back from us

Consultations with students and staff
Consultations are via Microsoft TEAMS, ZOOM, phone, and email. Face-to-face meetings may be arranged if requested.

CONTACT DETAILS

Missionvale Campus

Email: Andile.Mhlahlo@mandela.ac.za

South Campus

Email: Linda.Mostert@mandela.ac.za

Second Avenue Campus

Email: Gino.Fransman@mandela.ac.za

George Campus

Angelo.Meyers@mandela.ac.za

A list of editors for postgraduate students is available on request.

Submit Your Assignment by using the following link:

<http://forms.mandela.ac.za/writingcentre/registration/>



STUDENT DISCIPLINARY CODE



1. Sexual Harassment

Nelson Mandela University is committed to provide a safe environment with mutual respect and free from all forms of discrimination and harassment, including sexual harassment. Sexual harassment means any unwanted or unwelcome, implicit and/or explicit sexual advances (non-verbal, verbal, physical, etc.) which are offensive and distressing to a person. The

university's Sexual Harassment Policy outlines the procedures to deal with sexual harassment complaints by staff and students in a fair and sensitive manner, ensuring that it stays confidential.

Anyone who experiences sexual harassment is encouraged to express his or her complaint without fear of prejudice.

Where to go for help:

The Campus Health Service on your campus

South: 041 504 2174
North: 041 504 1149
Second Ave: 041 504 3762
Missionvale: 041 504 1374
George: 044 801 5062

Ulleta Marais: 072 710 9965 / ulleta.marais@mandela.ac.za
Vuyo Ngcofe, **GBV case coordinator:** 071 012 1361 / vuyolwethu.ngcofe@mandela.ac.za
t.me.mandela.ac.za/sexual-harassment
Email: harassment@mandela.ac.za

2. Gender-Based Violence

Gender-Based violence encompasses the spectrum of abuse directed at individuals and groups based on their specific gender role in society. It is experienced disproportionately by women and is perpetrated predominantly by men. Women and girls are the most at risk and most affected by gender-based violence. However, boys and men can also experience gender-based violence, as can sexual and gender minorities. Regardless of the target, gender-based violence is characterised by the use and abuse of physical, emotional, psychological and/or economic power and control. It is well documented that the consumption of substances (e.g. alcohol, drugs) can diminish self-control and exacerbate aggression, and act as catalysts for acts of gender-based violence.

Gender-based violence on campus manifests in the following ways:

- Grading or rating of appearance by verbal

comment, or wolf whistling, or other inappropriate sounds;

- Stalking and repeated, unwanted requests for dates;
- Derogatory comments, including comments relating to an individual's gender non-conformity;
- Rape; Sexual assault;
- Physical assaults by intimate partners, or against individuals perceived as gender non-conforming;
- Requests/demands for sex in exchange for marks, accommodation in residences, or other needs and benefits;
- Spying, or intruding upon women in residences while bathing or dressing;
- Streaking and flashing;
- In abusive relationships, preventing, or interfering with, a partner's studies, including withholding fees; and
- Murder by an intimate partner.

Break the silence!! No means No!!
#IAmAmanda

MEMEZA!





UNWINDING SPOTS

Food On The Move

All major fast food outlets can be found at various points in the Bay. You can order in food from McDonald's, which is open 24 hours and has a drive-thru. KFC and Barney's Tavern are located at the Shark Rock Pier. There are many other franchises such as Wimpy, Debonairs and Steers, located mainly in the Boardwalk and Summerstrand area. These restaurants also deliver. There are cafeterias spread out across the different campuses where you can get food at affordable prices.

Eating Out

If you just fancy something light, reasonable and close by, then try:

- Debonairs Pizza
- Roman's Pizza
- Charlie's
- Nandos
- Steers
- La Fiesta
- Roco Mama's
- Mike's Kitchen
- The Coachman
- Spur
- Doppio Zero
- Chicken Licken

Around Missionvale Campus:

- Lifa & Mafa Braai Place

Eating In

Feeding the yourself is pretty important, so we've put together students' favourite food spots.

If you don't have the time and need a quick bite to eat then head for:

- Van's Tuckshop at the taxi rank at South Campus
- Kwa-Yem Yem, South Campus
- Kwa-Yem Yem, North Campus
- 2nd Avenue Cafeteria
- Missionvale Campus Cafeteria in the Student
- Life Centre
- South Campus Food trucks

Socialising And Cruisin'

And when your thirst and hunger needs a boost, you might want to check out the following GQ hotspots:

- Barney's Tavern
- Beer Shack
- Banana Lounge
- Cubana
- Finnezz
- Foods
- The VIP Dockside
- White Tiger

Show Me Entertainment

Student life is not just about studying, eating and socializing. There are other forms of entertainment namely:

- Boardwalk (Summerstrand): cinema, arcade, casino etc.
- Walmer Park and Greenacres Shopping Centre
- have cinemas and many restaurants
- Seaview Lion and Game Park
- Opera House in Central has many theatre performances all year round
- Paintball Heaven
- The Gqeberha beaches - Loads of free fun in the sun
- Baywest Mall - movie theatre, game arcade and restaurants
- Music performances at the University hosted by the Music Department
- Park Run @ Hobie Beach

Show Me The Shops

There are other ways to spend the weekend as a student. Why not explore the malls and shopping centres around Gqeberha such as:

- Walmer Park Shopping Centre
- Greenacres Shopping Centre
- The Boardwalk Mall
- Baywest Mall
- Kenako Mall
- Cleary Park Shopping Centre
- Pier 14 Shopping Centre
- Govan Mbeki Street (Town)

MY STUDENT BUDGET PLANNER



Tips to Budgeting the Mandela Way

Step 01 Monthly Income

Family Support

Student Loans

Wages

Savings

Other

TOTAL

Step 02 Grants

Bursary

Scholarship

NSFAS

TOTAL

Step 03 Direct Expenses

Accommodation

Meals

Books and Supplies

Entertainment

Other

TOTAL

Step 04 Remaining Balance

Monthly Income

Grants +

Direct Expenses

TOTAL

See the link below for the online estimations:

mandela.ac.za/Academic/Courses-on-offer/Career-study-fields



SNAC STUDENT HUNGER



Life of a Student

Nelly M is a first-year BA general student at Nelson Mandela University. The first few months of the semester were much harder than she thought it would be. She was approved for funding by NSFAS, but allowances were not paid in the first few months due to issues with service providers. This made life very difficult.

When she finally received her allowance, it was a good day. She went to Spar immediately and filled her trolley with all her favourite things. Snacks, chocolates, alcohol...all the non-essentials. It was great for the first week, until the things started to run out. Suddenly, she was just one week into the month and had no money and no food left.

Has this happened to you?

Student hunger is a serious threat to student success at institutions of higher education in South Africa, with an estimated 30% of South African students struggling with food insecurity.

Mandela University's official response to student hunger is the distribution of food parcels to unfunded students via Campus Health. This is a last resort, and there are not nearly enough to meet the demand. As a result, some faculties, schools and departments have food cupboards or food parcel initiatives of their own, so be sure to enquire with your respective department, as well as the SRC.

In 2022, the Mandela University Food Systems programme started a student hunger subgroup (Operating through SNAC - Student, Nutrition, Advocacy & Communication). Positioned in the Social Development Professions Department, this subgroup is looking at designing and implementing approaches to address student hunger that are student-centred, sustainable and humanizing.

Feed the mind. Scan for more.



Follow @snacstories

SHUTTLE SERVICES - REGISTRATION



1. Eligibility for Shuttle Services

- Residents of Accredited Off-Campus Accommodation: Students in off-campus accredited accommodation can use shuttle services to transport them to campus.
- Other Off-Campus Students: Students not living in accredited off-campus residences qualify only for inter-campus travel services.



2. Shuttle Cards

Successfully registered students will be issued shuttle cards, which will indicate the type of shuttle service available to them based on their profiles.

3. Campus To Campus Card:

- All University students are eligible to register for a Campus-to-Campus card which provides limited shuttle access between campus
- However, the card is not valid for outbound shuttle services from campus to off-campus residences.

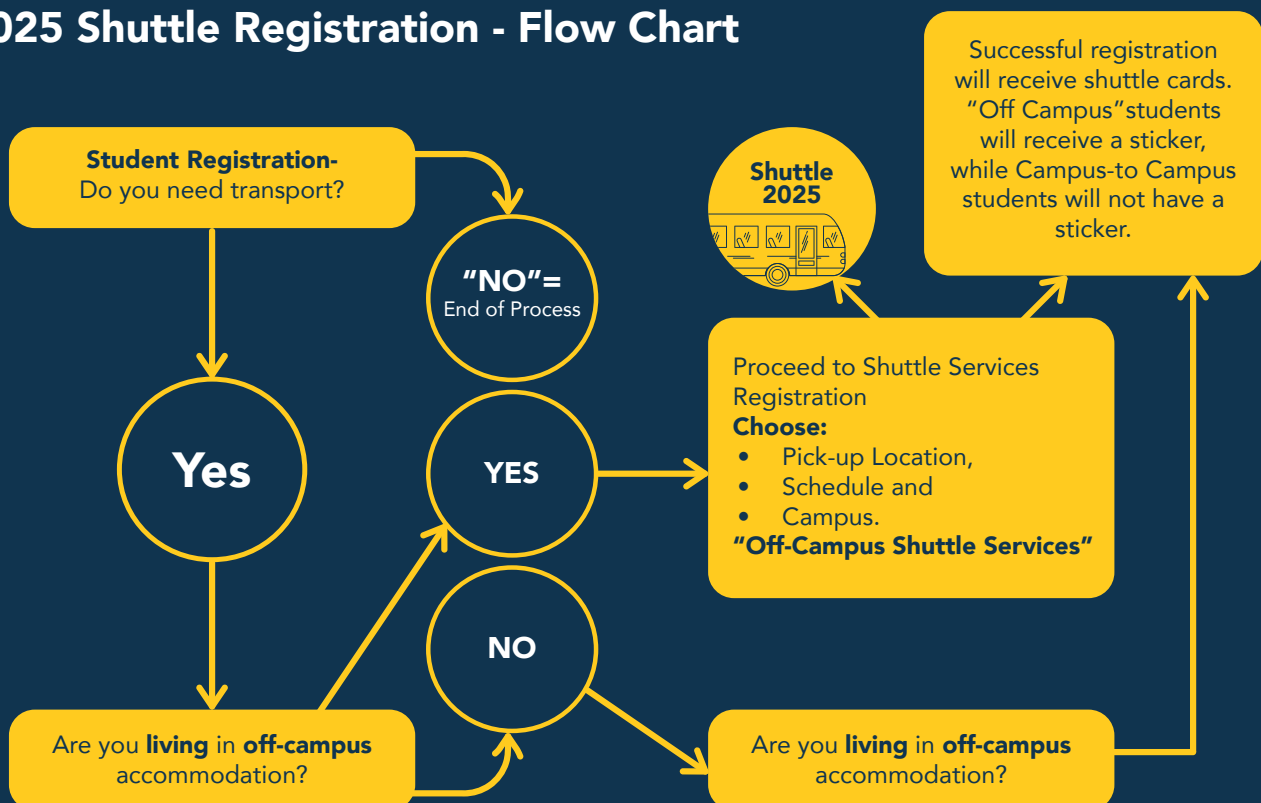
4. Off-Campus Card (out-bound)

Only the following students are eligible (qualify) to be registered for the Off-Campus card:

- Non-recipients of a transport allowance.
- Accredited off-campus resident.

This card provides unlimited shuttle access from off-campus accredited accommodation to campus.

2025 Shuttle Registration - Flow Chart



SHUTTLE SERVICES - LOCATIONS



The shuttle stops are strategically located to accommodate nearby residents, allowing convenient travel for students.

<https://maps.app.goo.gl/zsk5YCCPHFLkiC24A>

Shuttle Stops	Location /GPS Coordinates
• Uitenhage Railway Station	-33.771200,25.408369
• Missionvale Campus	-33.872106,25.550764
• Korsten (PSA 163 Durban Road)	-33.9309257, 25.577005
• Sydenham (Klesal/PSA 10 on Smart)	-33.9320638,25.6010538
• Varsity Park	-33.9414832,25.60244578
• Law Court (Smada)	-33.94422265,25.60608794
• North End (Lamsa/Mount Road)	-33.9471964,25.6064937
• Pier 14 (Pier 14)	-33.95153569, 25.60933752
• Castle House - Evatt Street	-33.957919,25.618097
• Russell Road – Home Choice	-33.958461,25.619111
• Kalinga House - Richmond Hill	-33.95977470, 25.61418080
• The Suites - Rink Street	-33.9623296, 25.6098983
• Russell Road	-33.958523, 25.619120
• Central - Donkin (King Edward Hotel)	-33.96201000, 25.6190670
• Brickmakers Kloof Road	-33.969605, 25.618066
• Feather Market Hall (Govan Mbeki Ave)	-33.963279, 25.623828
• Shell Garage - Walmer Blvd	-33.973773, 25.617950
• Walmer PSA	-33.975433, 25.610051
• Forest Hill (Garage, Morestond Flats & Stadium)	-33.9837144, 25. 6348760 & -33.980594, 25.629443
• Kings Beach, Humewood	-33.9747092, 25. 6427581 & -33.9741283, -25.6433971
• 2nd Avenue Campus	-33.988990, 25.661016
• Pick n Pay, Summerstrand	-33.985494, 25.6697850
• Summerbreeze Spar, Summerstrand	-33.998357, 25.654337
• Gomery Shuttle Stop (Gomery Place/Omega/ Dunes)	-34.001163, 25.661584
• SSV Residences, Summerstrand	-33.9937312, 25.6775240
• North Campus, Summerstrand	-34.003497, 25.674100
• South Campus, Summerstrand	-34.009918, 25.674259

ON THE GO TRANSPORT (GQEBERHA)



The Dawid Stuurman International airport is about a five-minute drive from the University. You can get to the campus by shuttle or cab. Find the numbers for different cab services below.



The main long-distance bus services travelling to Gqeberha are Translux, Greyhound, Intercap and City-To-City. They all stop at Greenacres Shopping Centre and the train station in the city centre. You can travel from Greenacres to Nelson Mandela University with a public bus, by cab/UBER or by mini-bus taxi. From the train station, you can take a public bus or mini-bus taxi, which can be found right across the road from the station.



The Algoa Bus Service as well as a mini-bus taxi service runs from the Norwich Terminal across the road from the train station. Alternatively, you can take a cab or UBER.



A mini-bus taxi service runs from Greenacres Shopping Centre to the University, between 07:30—18:00. They will transport you to the city centre (Norwich Terminal), where you transfer to a different mini-bus taxi that will take you to the University.

Campus Shuttle Service



The Nelson Mandela University offers a shuttle service which runs through Summerstrand all the way to places like Uitenhage in efforts of making the University more accessible to everyone. Shuttles are available at South, North, Second Avenue and Missionvale campuses and run on a specific timetable.



Parking discs will be handed out during Registration

Cab Services

Air Taxi: 0822113874; Beach Cab: 0834761079;
Sisa Maxiwa: 0737581850 or 0764260145 or enkositravel@gmail.com; Hunter Cabs: 041-5855500

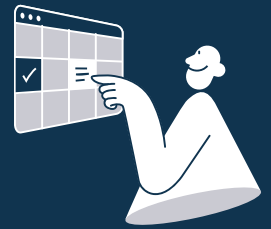
Shuttle

Blunden 0414514803; Van Rensburg Shuttle Services 041-5834435 or 0836543242. Alternatively, enquire at the Info Centre at the airport.

Algoa Bus Service

041-4041200 or 0801421444 - Free call for timetable information

TIPS FOR TIME MANAGEMENT



1 Schedule

Set aside a schedule . Mark all fixed commitments such as class attendance and tutorials . Add in study time for each day, and then for research, projects and assignments.

2 Use a Planner

A planner can be an effective and easy way to help you organise your time. Enter your daily lecture timetable. Make use of your diary to plan for the year. Enter main events such as exams, assignments, tests and sport fixtures, etc. You will need to plan your time every week.

3 Avoid Marathon Study Sessions

A couple of hours each day will help you to remember more than 8 hours at once. Schedule your study time over 5-6 days instead of packing it into 1-2 days.

4 Be Flexible With Your Time

Relax and enjoy the extra time you discovered. Spare some time for recreational and co-curricular activities such as sports, hobbies and interests.

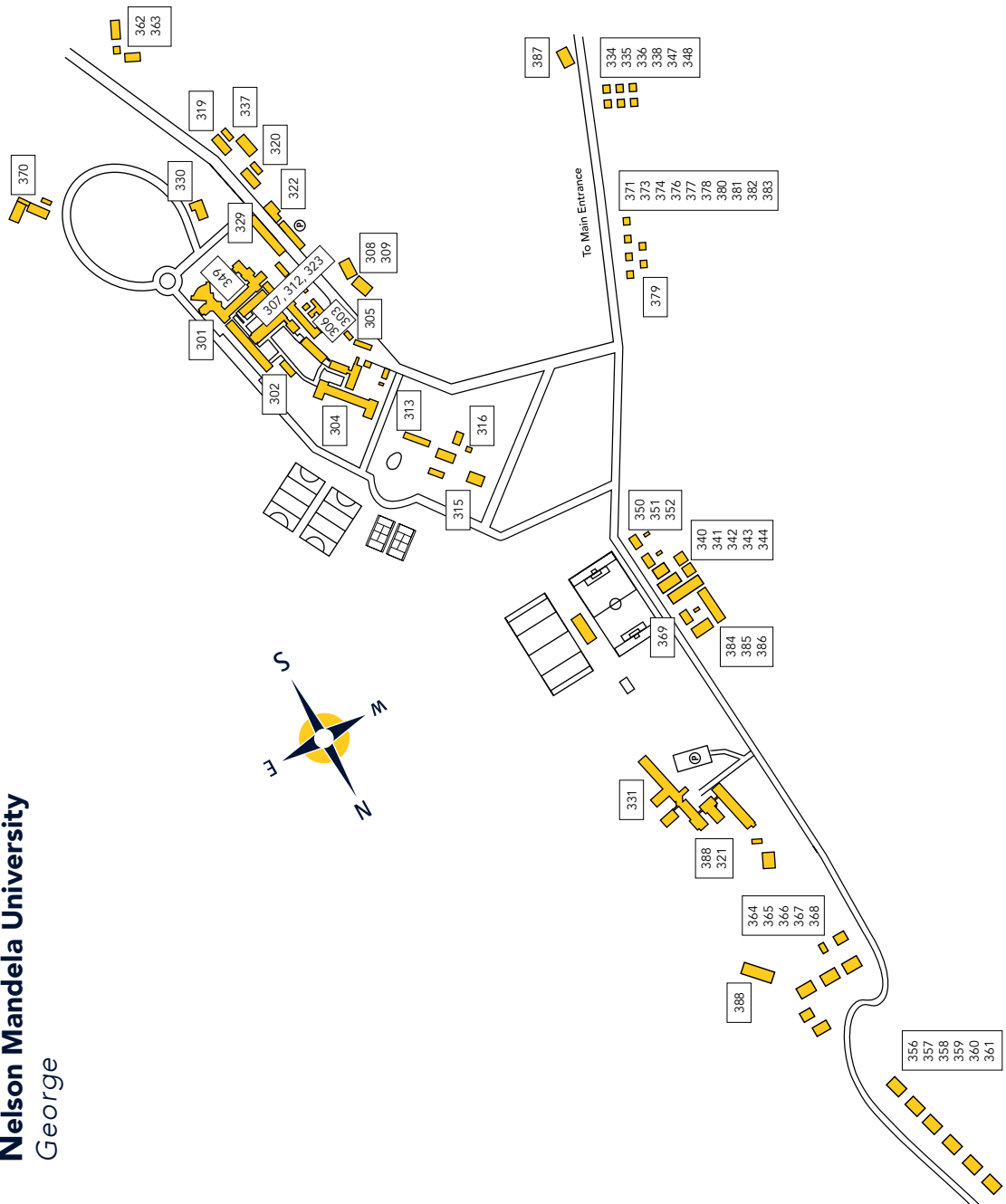


IT'S A GOOD IDEA TO GET INVOLVED JOIN A SOCIETY TO DEVELOP YOURSELF FULLY



RELIGIOUS SOCIETIES	
ACTS (Assoc of Catholic Tertiary Students)	APOSTOLIC FAITH MISSION
ANGLICAN SOCIETY	BANTU CHURCH OF CHRIST ASSOCIATION
BELIEVERS LOVE WORLD	CHI ALPHA CAMPUS MINISTRIES
CHRISTIAN STUDENTS ASSOCIATION	CITY OF LIGHT STUDENT MINISTERIES
COMPLETE LIFE IN CHRIST	GOD'S REVIVAL MOVEMENT
FAMILY CHRISTIAN FELLOWSHIP	JOS (Jesus the Only Solution)
LIGHTHOUSE CHAPEL INTERNATIONAL	METHSOC
MUSLIM STUDENT ASSOCIATION	NEW APOSTOLIC STUDENT SOCIETY
RUCC FORCE CAMPUS MINISTRIES	SCO
TASA (Twelve Apostles)	SDASM
UCAN (United Christians at NMU)	UPRESS (Presbyterian)
VISION UNLIMITED	WELLS OF LIFE
WORD OF LIFE	ZCCSF (Zion Christian Church Student Fellowship)
YOTKOG	
POLITICAL SOCIETIES	
EFFSC	SASCO
DASO	PASMA

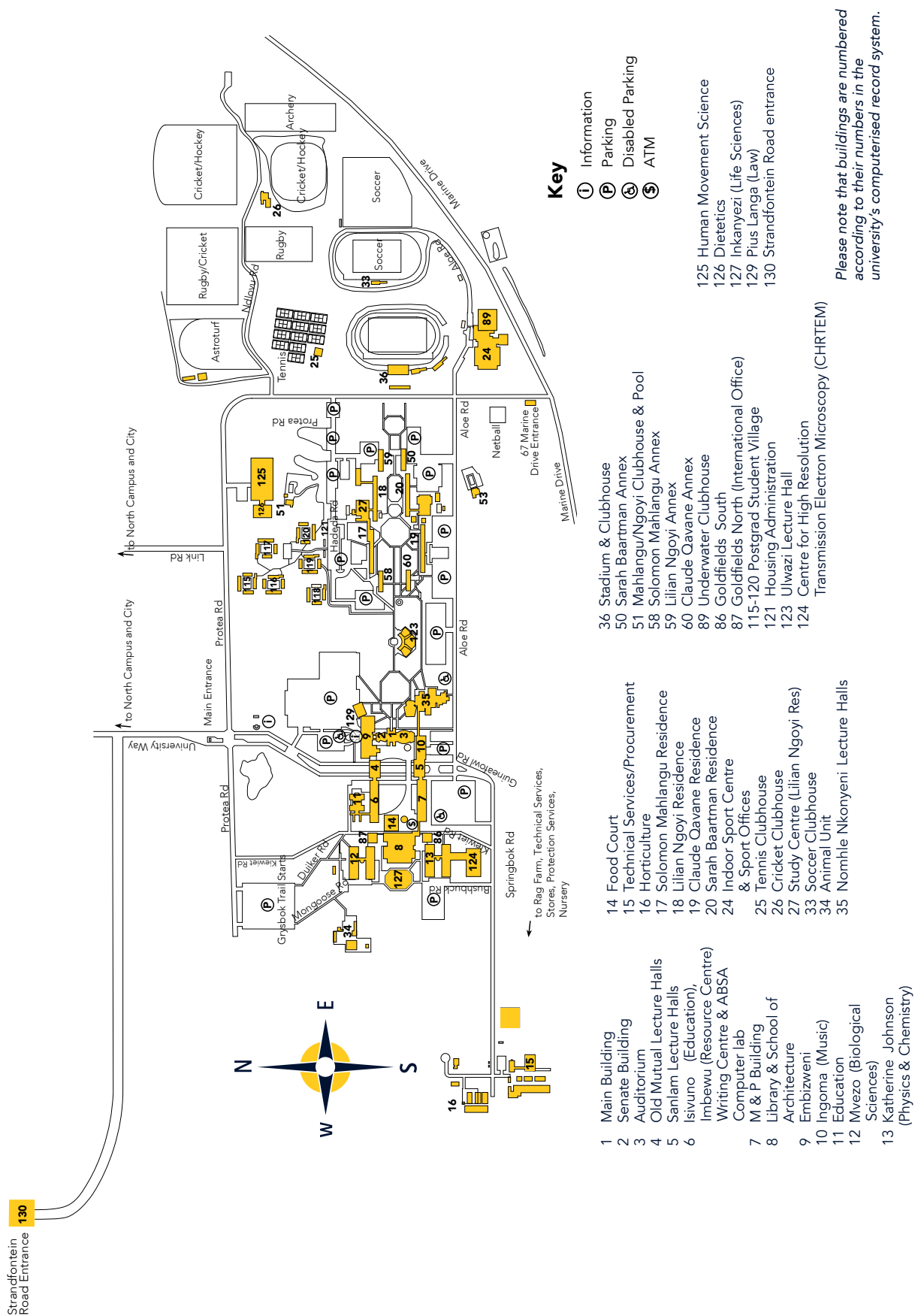
301	Mopanie Offices, Lecture Venues & Main Hall
302	Lecture Venue
303	Oukraal, Kiepersol, Assegai Residences & Societies
304	Reeva Steenkamp Residence (Kalandar)
305	Isiko (Dining Hall) & Emlanjeni (Laundry)
306	Indlovukazi Residence (Outeniqua)
307	Lecture Venue
308/9	Sneezewood Residences
312	Campus Health
313	Fitness & Aquatics Centre
315	Superintendent Residence
316	Squash Courts
319	Furtech Labs
320	Furtech Class
321	Research Building
322	ISSO – Maintenance
323	Protection Services
329	Babcock Building
330	Fatima Meer Residence (Pampoenkraal)
331	Admin Building, Staff lounge & Conference Centre
332	Admin/Research Link (Forestek)
334-6	Nathaniel Julies Residences 1-6
338, 347, 348	Furtech Auditorium & Lecture facilities
337	Sindiso Magaqa Heights (Block A-D)
340-44	Lecture Venues & Library
349	Quercus Residence
350	Matumi Residence
351	Kremetart Residence
352	Kaunda Ntunja 1-6 (Tierkop)
356-361	David Webster Residence (Ystermaartiens)
362	Patula Residence
363	Bavelille Hongwa Residence 1-5 (Akkerdraai)
364-68	Athenkosi Mbangatha Offices (Stinkwood)
369	Sophiatown & SRC
370, 371, 374	Richard Maponya Houses (Windheuwel)
376-78, 380-383	Mieta Nontinam Leholo Residence (Windheuwel Flats)
379	Johnny Clegg Residence (Phoenix)
384	Nadine Gordimer Residence (Kamassie)
385	Umdoni Residence
386	Madiba Drive Entrance
387	Denis Goldberg Flats (Akkerdraai)
388	



South Campus, Summerstrand

Nelson Mandela University

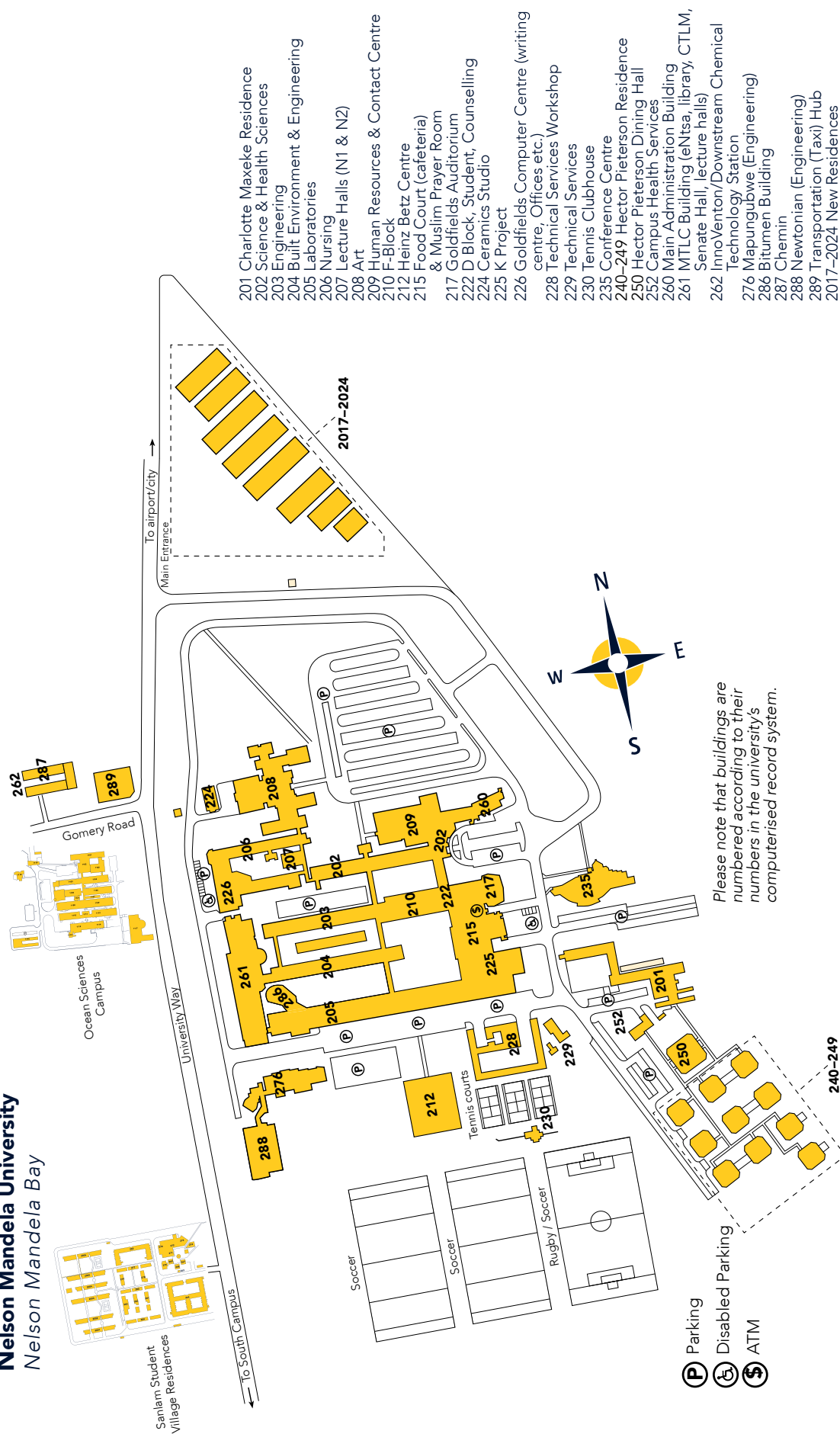
Nelson Mandela Bay



North Campus, Summerstrand

Nelson Mandela University

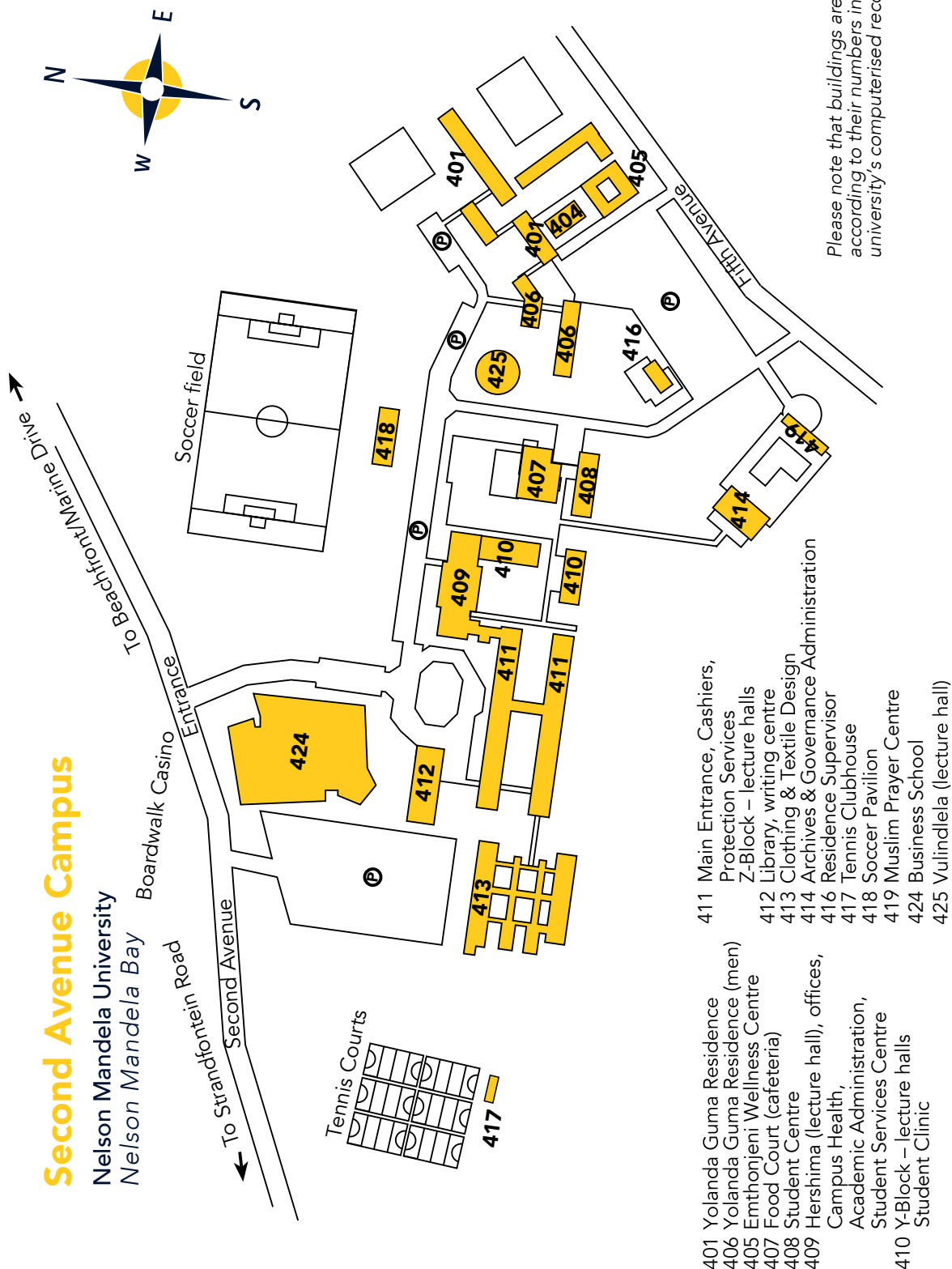
Nelson Mandela Bay



Second Avenue Campus

Nelson Mandela University

Nelson Mandela Bay



Please note that buildings are numbered according to their numbers in the university's computerised record system.

- | | |
|---|--|
| 401 Yolanda Guma Residence | 411 Main Entrance, Cashiers, Protection Services |
| 406 Yolanda Guma Residence (men) | 412 Library, writing centre |
| 405 Emthonjeni Wellness Centre | 413 Clothing & Textile Design |
| 407 Food Court (cafeteria) | 414 Archives & Governance Administration |
| 408 Student Centre | 416 Residence Supervisor |
| 409 Hershima (lecture hall), offices, Campus Health, Academic Administration, Student Services Centre | 417 Tennis Clubhouse |
| 410 Y-Block – lecture halls | 418 Soccer Pavilion |
| Student Clinic | 419 Muslim Prayer Centre |
| | 424 Business School |
| | 425 Vulindlela (lecture hall) |

Missionvale Campus

Nelson Mandela University

Nelson Mandela Bay



Please note that buildings are numbered according to their numbers in the university's computerised record system.

Ocean Sciences Campus, Summerstrand

Nelson Mandela University
Nelson Mandela Bay



Bird Street Campus Nelson Mandela University Nelson Mandela Bay



Inter-campus map

Nelson Mandela Metropolitan University

Nelson Mandela Bay

